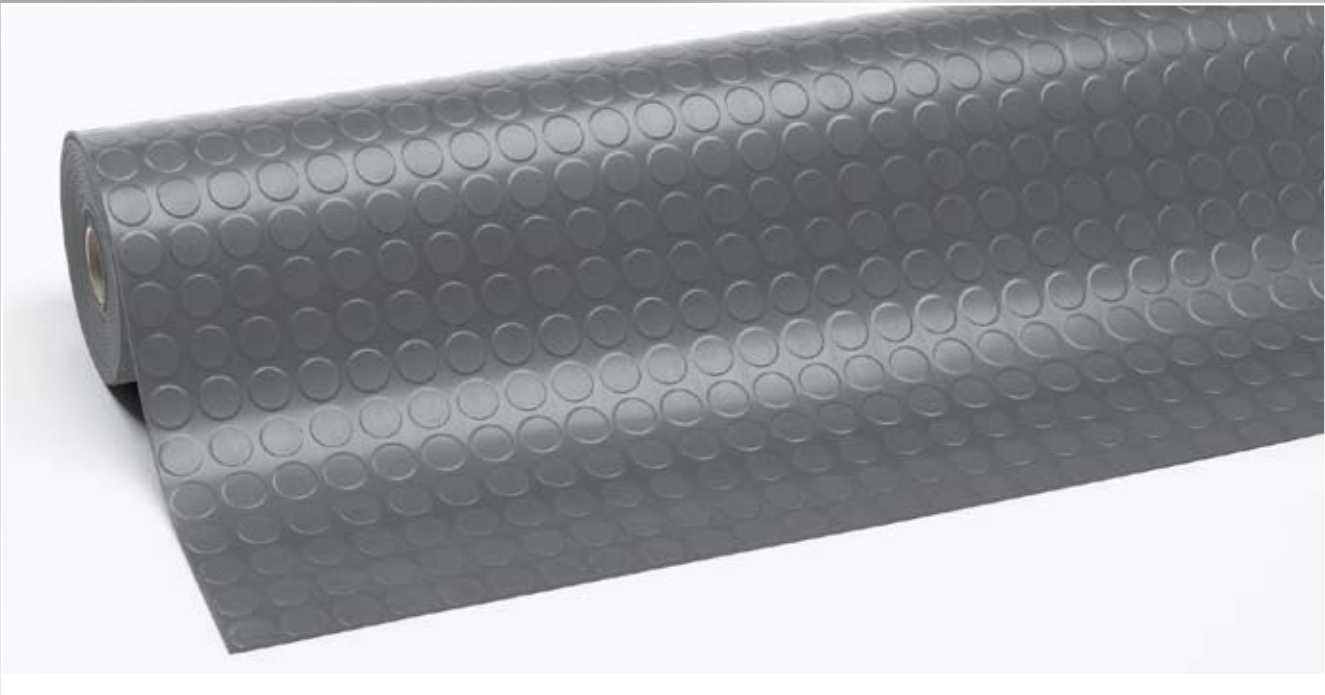
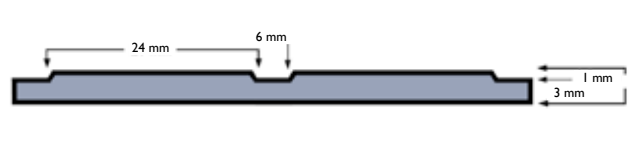


745 Dots'n'Roll™ 4 mm



- Allround floor covering for industrial and general applications.
- Matting with excellent wear and tear resistance. Used as flooring, shelf liners and in all kinds of industrial applications in workshops, near machines and any place where objects may tend to slide on workbenches, carts, cars or lorry booths.
- Suitable for buildings, walking areas, stations, airports, supermarkets, lifts, busses, ships, etc.



745 Dots'n'Roll™ 4 mm

PRODUCT SPECIFICATIONS			
Designation	Non-directional matting		
Type	Flooring / runner		
Description	Profile raised dots surface		
Material	Synthetic rubber		
Process	Calendering		
Category	Non-directional pattern		
Recommended use	Industrial and general applications. Buildings, walking areas, stations, airports, supermarkets, lifts, buses, ships etc.		
Colours	Black, Grey		
Weight	59.2 kg per mat		
Thickness	4 mm		
Standard sizes	100 cm x 10 m		
Custom sizes	N/A		
Special remarks	Resistance to temperature : -20°C, +70°C		
PRODUCT TESTING			
Tests		Norms	Results
Compression deflection		U.S.	
	1.4 kg/cm²		
	2.8 kg/cm²		
Foam battery		ASTM D3574	
Abrasion resistance		ASTM D3884-01	
	500 Cycles		
	5000 Cycles		250 mm³
Static coefficient of friction		ASTM C1028-96	
Elongation		ASTM D412	250%
Breaking load		ASTM D412	
Graves tear strength		ASTM D 1004	20 N/mm²
Hardness		ASTM D2240-02	75 Shore A
Anti-slip		DIN 51130 and BG-RULE BGR181	R9
FIRE TESTING			
	Critical radiant flux	ASTM E-648	
	Fire retardancy	DIN4102	
		EN 13501-1	
	Flammability test	ASTM D2859	
ESD		ANSI ESD S7.1 50% Humidity	
Sustainability		<ul style="list-style-type: none">• Recyclable material• Reach Compliant (Registration, Evaluation, Authorization and Restriction of Chemicals)	